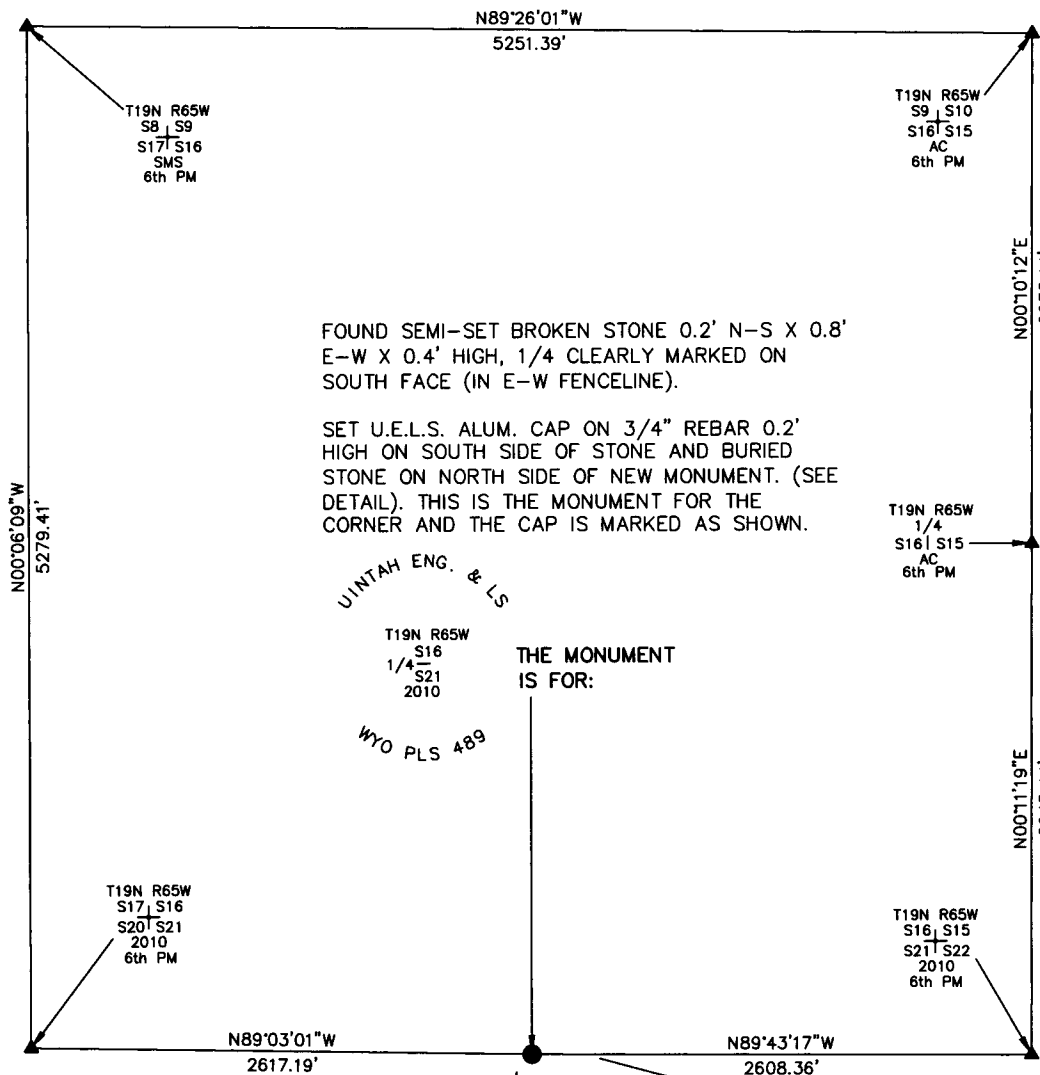


State of Wyoming Corner Record

CORNER PERPETUATION AND FILING ACT,
Regulations of the Board of Registration for Professional Engineers and Land Surveyors.)

Reverse side of this form may be used if more space is needed.

Record of original survey and citation of source of historic information (if corner is lost or obliterated). Description of corner monumentation evidence found and/or monument and accessories established to perpetuate the location of this corner. Sketch of relative location of monument, accessories, and reference points with course and distance to adjacent corner(s) (if determined in this survey). Method and rationale for reestablishment of lost or obliterated corner.



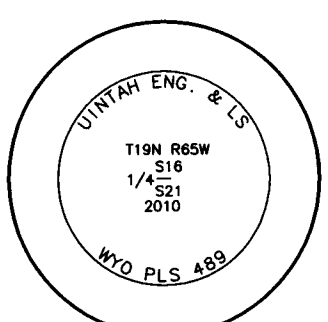
SCALE 1"=1000'
(EXCEPT IN TRIVIAL CASES)
BEARINGS ARE RELATED TO WGS 84 WITH GPS OBSERVATIONS
DRAWN BY: M.D. P.C. G. STREETER
COUNTY: LARAMIE

FOUND SEMI-SET BROKEN STONE 0.2' N-S X 0.8' E-W X 0.4' HIGH, 1/4 CLEARLY MARKED ON SOUTH FACE (IN E-W FENCELINE).

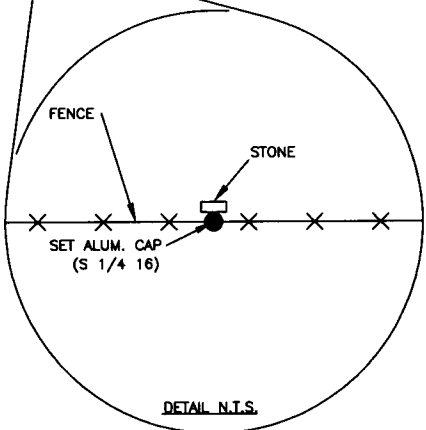
SET U.E.L.S. ALUM. CAP ON 3/4" REBAR 0.2' HIGH ON SOUTH SIDE OF STONE AND BURIED STONE ON NORTH SIDE OF NEW MONUMENT. (SEE DETAIL). THIS IS THE MONUMENT FOR THE CORNER AND THE CAP IS MARKED AS SHOWN.

UINTAH ENG. & LS
T19N R65W
1/4 S16
S21
2010
WYO PLS 489

THE MONUMENT IS FOR:



THE MONUMENT IS MARKED



DETAIL N.T.S.

Date of Field Work: 06/22/2010 Office Reference: _____

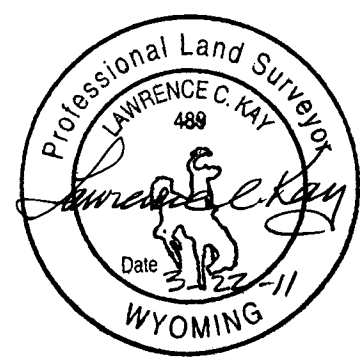
CROSS INDEX DIAGRAM

A	1	2	3	4	5	6	7	8	9	10	11	12	13	14	15	16	17	18	19	20	21	22	23	24	25	A
B																										B
C		6			5				4					3					2							C
D																										D
E																										E
F																										F
G			7			8			9			10			11				12							G
H																										H
J																										J
K																										K
L				18			17			16			15			14			13							L
M																										M
N																										N
O																										O
P				19			20			21			22			23			24							P
Q																										Q
R																										R
S																										S
T				30			29			28			27			26			25							T
U																										U
V																										V
W																										W
X				31			32			33			34			35			36							X
Y																										Y
Z	1	2	3	4	5	6	7	8	9	10	11	12	13	14	15	16	17	18	19	20	21	22	23	24	25	Z

Firm/Agency, Address
UELS, LLC
85 South 200 East
Vernal, Utah 84078

Telephone Number: 435-789-1017

This corner record was prepared by me or under my direction and supervision.
SEAL & SIGNATURE



RECORDED 3/25/2011 AT 11:41 AM REC# 565481 BK# 2213 PG# 305
DEBRA K. LATHROP, CLERK OF LARAMIE COUNTY, WY PAGE 1 OF 1